

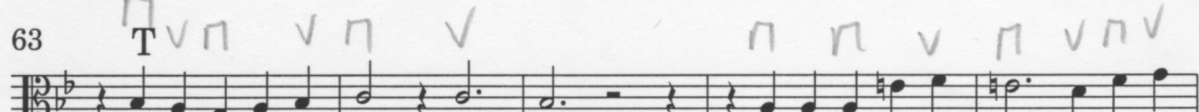
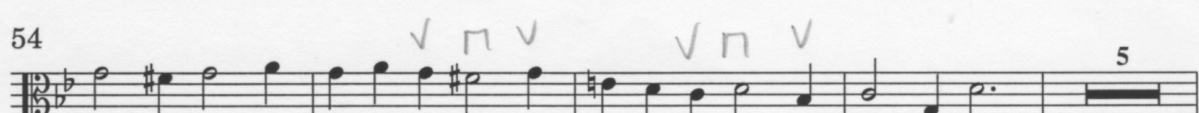
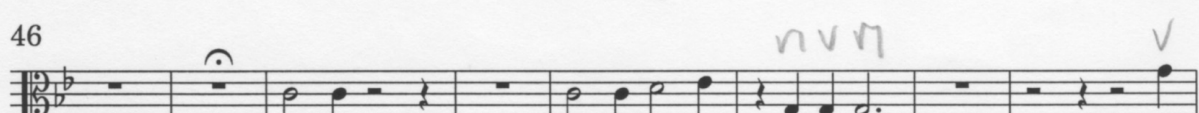
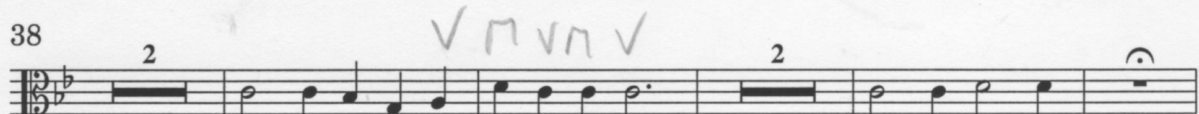
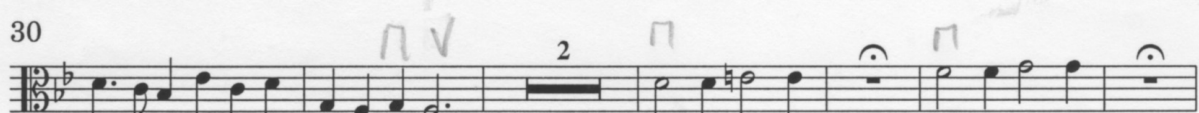
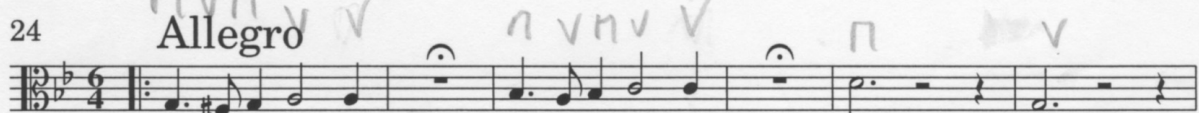
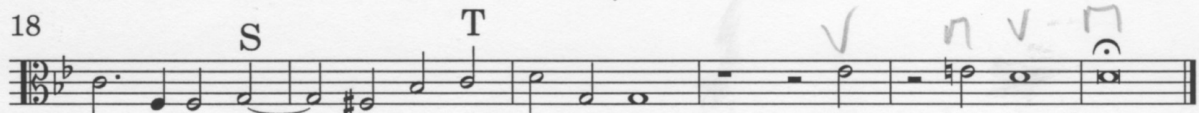
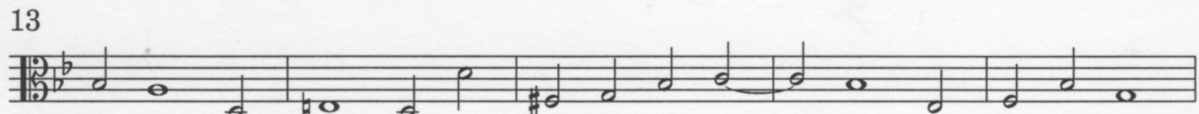
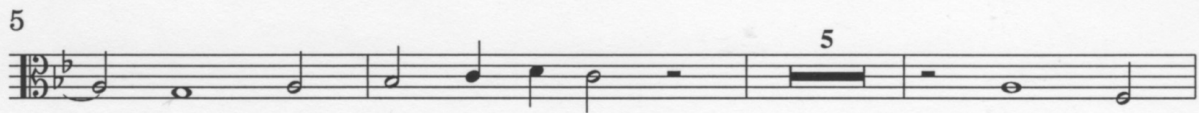
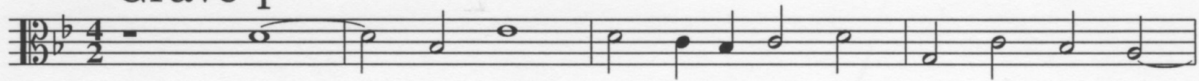
# Sonata II

(Armonico Tributo)

Georg Muffat

## Viola 2

Grave T



68

Musical staff 68, starting with a treble clef and a key signature of two flats. The staff contains a sequence of notes with various articulations and dynamics. Handwritten annotations include 'v' (accents), 'n' (breath marks), and '3' (triplets). A fermata is placed over the final measure.

76

Musical staff 76, continuing the piece with similar notation and articulations. Handwritten annotations include 'v', 'n', and 'S'. Dynamics 'p' and 'pp' are indicated below the staff.

82

Musical staff 82, featuring a dynamic shift from 'ppp' to 'f'. Handwritten annotations include 'v', 'T' (trill), and 'n'. Dynamics 'p' and 'pp' are also present.

89

Musical staff 89, starting with a dynamic of 'ppp' and moving to 'f'. Handwritten annotations include 'v', 'n', and '2' (second ending). A fermata is placed over the final measure.

96

Musical staff 96, beginning with a dynamic of 'ppp' and moving to 'f'. Handwritten annotations include 'v', 'n', and '4' (fourth ending). A fermata is placed over the final measure.

103

Musical staff 103, featuring dynamics 'p', 'f', and 'p'. Handwritten annotations include 'S' (sforzando), 'v', 'T' (trill), and 'n'. A fermata is placed over the final measure.

110 **Grave**

Musical staff 110, marked 'Grave'. The tempo is significantly slower than the previous section.

119 **Forte e allegro**

Musical staff 119, marked 'Forte e allegro'. The tempo is significantly faster than the previous section. Dynamics 'f' and 'p' are indicated.

123

Musical staff 123, continuing the 'Forte e allegro' section with various rhythmic patterns and articulations.

127

Musical staff 127, continuing the 'Forte e allegro' section with various rhythmic patterns and articulations.

131

Musical staff 131, continuing the 'Forte e allegro' section with various rhythmic patterns and articulations. Dynamics 'p' and 'f' are indicated.

134 **Grave**

Musical staff 134, marked 'Grave' and in a 3/2 time signature. Dynamics 'p', 'pp', and 'ppp' are indicated below the staff.

Aria

139 T  
 Musical notation for measures 139-142, starting with a forte (*f*) dynamic.

142 Musical notation for measure 142.

145 S  
 Musical notation for measures 145-148, starting with a piano (*p*) dynamic.

148 Musical notation for measures 148-151, including first and second endings, starting with a forte (*f*) dynamic.

151 Musical notation for measures 151-154, including dynamics *p* and *f*.

154 Musical notation for measures 154-158, including dynamics *p* and *f*.

158 Musical notation for measures 158-161, including a piano (*p*) dynamic.

161 Musical notation for measures 161-164, including first and second endings, starting with a forte (*f*) dynamic.

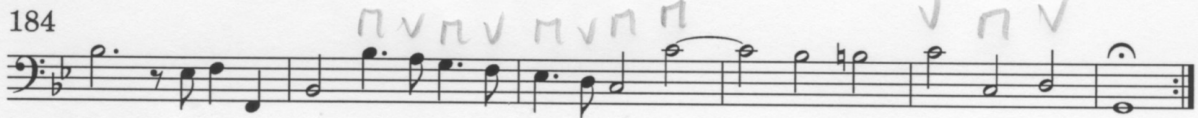
Grave

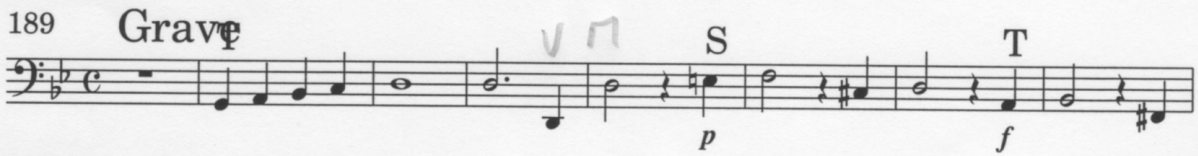
164 T  
 Musical notation for measures 164-174, starting with a Grave tempo.

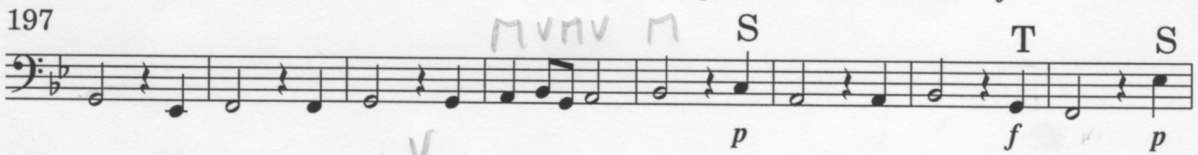
Sarabanda

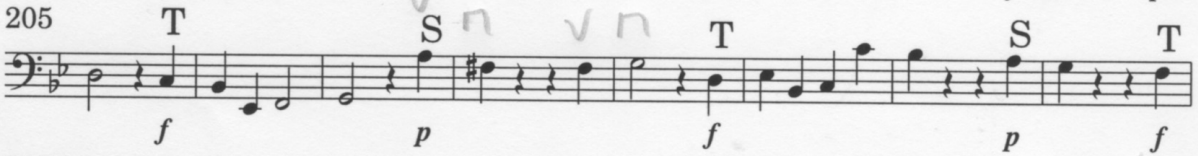
174 1.S/2.T  
 Musical notation for measures 174-178, including handwritten annotations.

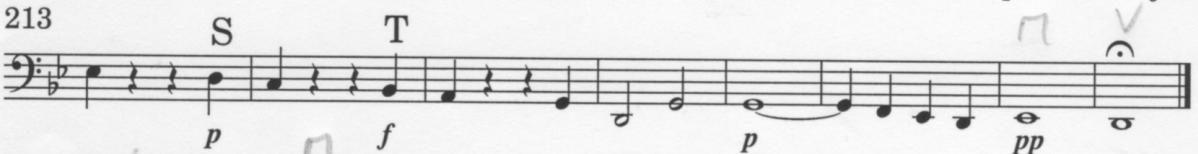
178 Musical notation for measures 178-181, including a 1.S/2.T annotation.

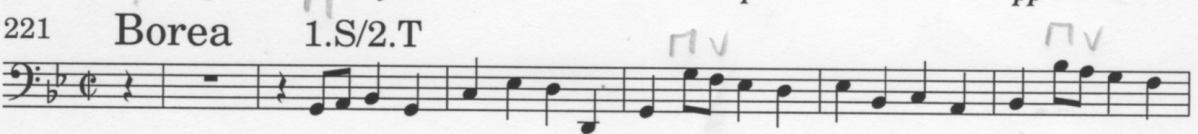
184 

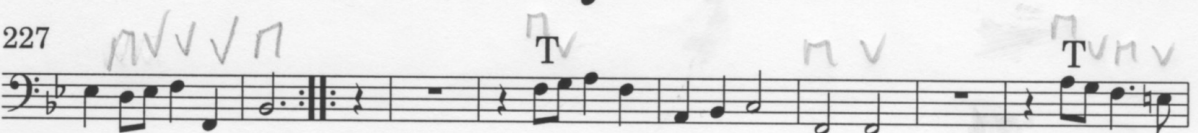
189 **Grave** 

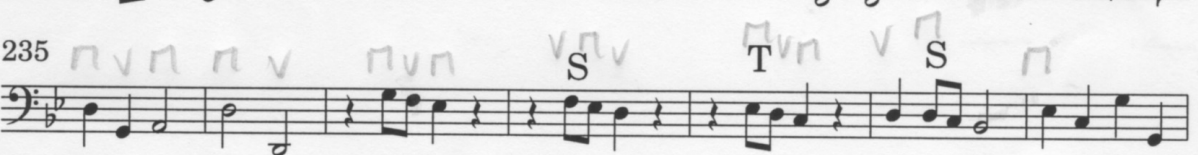
197 

205 

213 

221 **Borea** 1.S/2.T 

227 

235 

242 