

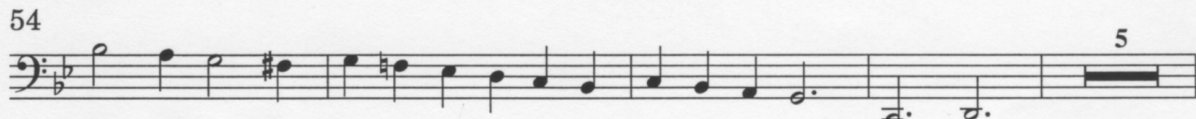
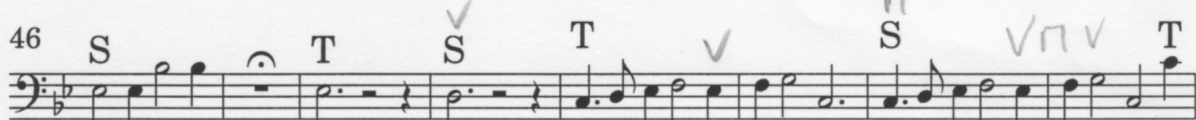
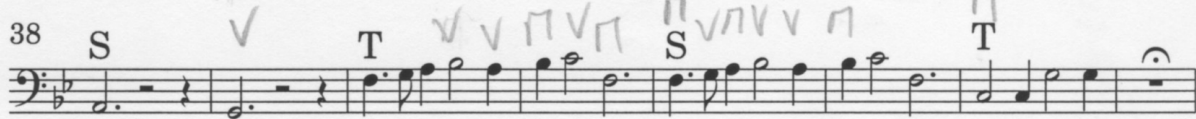
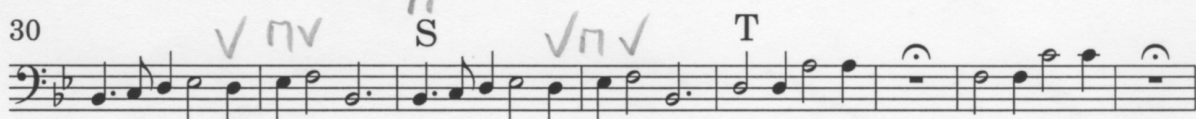
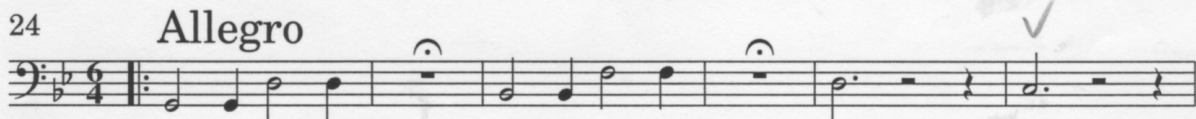
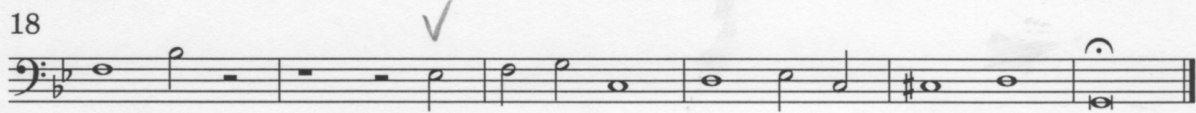
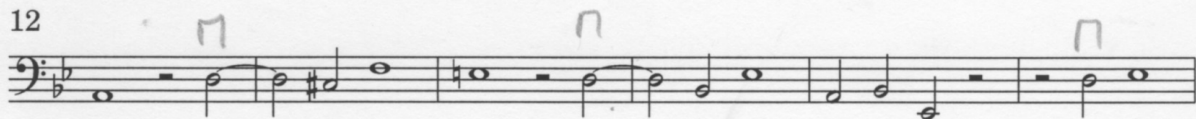
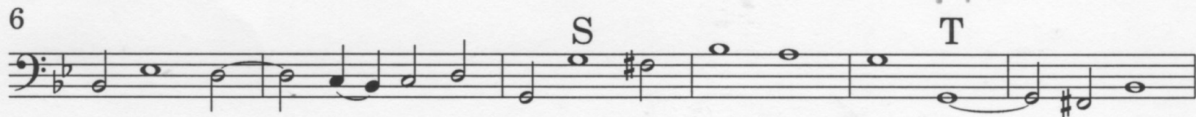
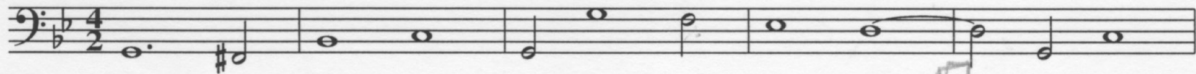
# Sonata II

(Armonico Tributo)

## Violoncello/ Violone

Georg Muffat

Grave  
T



68

Handwritten annotations: *v n v*, *v*, *n*, *n v*, *S n v*

75

Handwritten annotations: *n*, *v*, *T*, *n*, *v*, *n*, *S*, *n*

82

Handwritten annotations: *v*, *T*, *v n v v*, *n n n v*, *n n n v*

Dynamic markings: *ppp*, *f*, *p*, *pp*

89

Handwritten annotations: *n n v v*, *n n n v*, *n n v*

96

Handwritten annotations: *S*, *n n n v*, *T n v n*

103

Handwritten annotations: *S*, *n v*, *T*, *n v*, *v n n n v n n n v n n n*

Dynamic markings: *p*, *f*, *p*

110 **Grave**

Dynamic marking: *ppp*

119 **Forte e allegro**

Handwritten annotations: *S*, *T*

123

Handwritten annotations: *S*, *T*, *S*, *T*

127

Handwritten annotations: *S*, *T*

131

Handwritten annotations: *S*, *T*

134 **Grave**

Dynamic markings: *p*, *pp*, *ppp*

### Aria

T

139 *f*

145 *f*

151

158

### Grave

T

164 *f*

### Sarabanda

1.tace/2.T

174

178 1.tace/2.T

184

T

### Grave

189 *f*

197

205 *f* *p* *f* *p* *f*

213 S T *p* *f* *p* *pp*

221 Borea 1.tace/2.T

227

235 2

243 *f* 1 2